

PINNACLE SL600

HARMAR'S MOST COMPACT STAIR LIFT



CLEAR WALKWAYS

Harmar's exclusive automatic and mechanical folding rail (optional) removes obstructions and trip hazards at the lower landing area. Its operation is automatic, the user does not need to stop or have someone else assist. And since it's mechanical, there are no additional switches or controls.

A STEP ABOVE

The Pinnacle SL600 has earned its name and reputation for standing above the rest. Design, form, and function come together to make Pinnacle reliable, durable, and the most sought after stair lift available.

What makes Pinnacle different? It's what you don't see, the patented helical worm gear and reinforced nylon polymer gear rack. This drive system eliminates maintenance, and provides you with savings on lower energy bills and delivers a smooth ride.

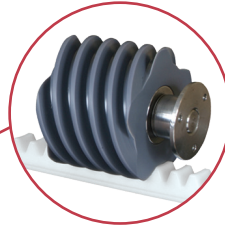
- Just 10 ½" wide when folded
- Ergonomic control switch
- No lubrication required
- Retractable seat belt

ALLmobility
MEDICAL EQUIPMENT SOLUTIONS
937-396-4838

PREMIUM PERFORMANCE YOU DESERVE



An LED in the armrest lets the user know when the lift is ready to operate.



Nylon-polymer gear with helical worm drive features 6-points of contact for a smooth ride.



Oversized footrest provides more comfort and security.



I couldn't be happier with the Pinnacle. I'm so glad I made this choice for my home. I feel safe going up and down the stairs again, and it's never in the way for my grandkids!

SL600 PRODUCT SPECIFICATIONS

WEIGHT CAPACITY	350 lb	INCLINE LIMITS	32° to 45°
TRACK LENGTH	15'6" to 70'	SPEED	20 FPM
SEAT SIZE	19"W x 16"D	FOOTREST SIZE	17" - 22" adjustable
FOLDED WIDTH	- 10 ½" - 13.6" with folding rail	DRIVE	- Patented nylon polymer - Helical worm gear
CERTIFIED	Yes Commercial	WARRANTY	- Limited lifetime - 1-year battery
SAFETY FEATURE(S)	- Retractable seat belt - Overspeed brake - Audible alert system - Swivel seat with interlock - Chassis obstruction sensor - Footrest obstruction sensor	OPTION(S)	- Automatic folding rail - Key lock - Extra rail - Manual lowering tool